

# Stranco® Dry Polymer Feed System

## PolyBlend® DP 2.5 VMZ

### Introduction

The PolyBlend® DP 2.5 VMZ is an automated dry polymer feed system for precise control and economical performance of powder grade polymers.

Polyelectrolytes require specifically designed energy regimes during preparation to attain correct physio-chemical state in solution in order to perform the tasks they were designed for. The PolyBlend® DP 2.5 VMZ system provides precise, programmable control of dosing rate, dilution levels, retention time and energy. With this exclusive control of these process variables you can be sure your polymers have the ideal mixing environment giving maximum yield efficiency from any polymer.

### Features

- Square profile, three zone dissolution tank with motor driven geared shaft drive to the three zones. Mixer blades are 304 SS smooth profile, open lateral blades specially designed for polymer dissolution. Energy in Zone 1 being greater than energy in Zone 2. The third zone leads to pump suction of this prepared concentrate
- PVC-u/GRP powder hopper (25kg) with clear section for level indication
- High energy dispersion unit for initial powder / water contact constructed from machined PVC-u
- Powder feeder with mechanical gear change for output speed



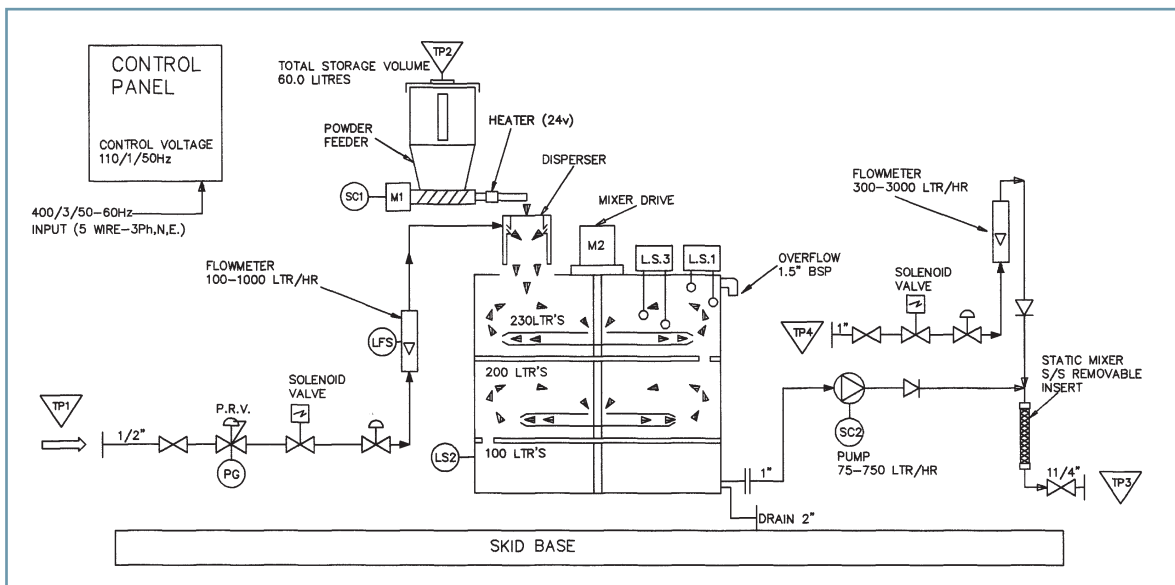
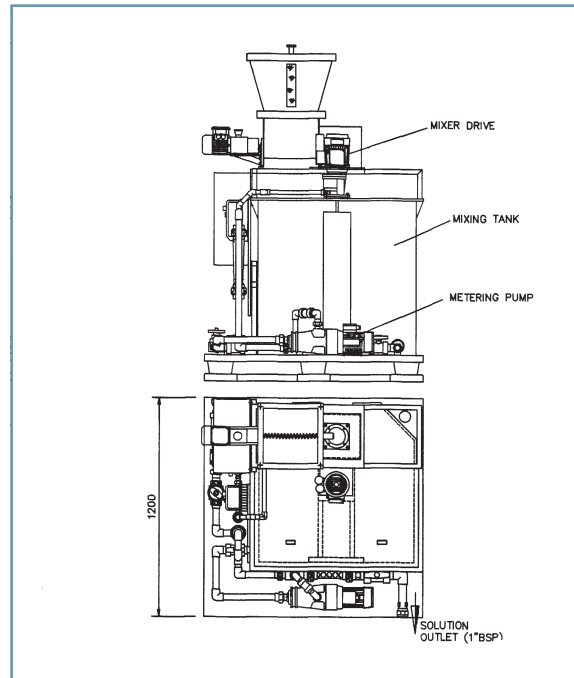
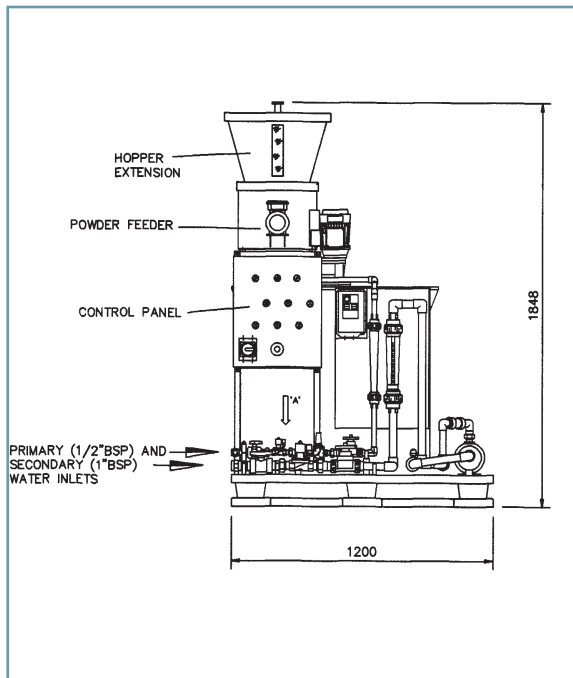
### Key Benefits

- High efficiency - well proven in the field with results showing efficient use of the polyelectrolyte using various manufacturers products
- System supplied as standard with secondary dilution and metering pump
- Continuous batch processing so the chemical is always ready for application
- Compact footprint
- Easy, innovative operation

variation and heater on the helical screw feed tube. Coated steel construction

- Primary water controls including pressure regulating valve, manual rate set valve, variable area flow indicator with low flow switch. Flowrate to be set 800 l/h min, 1000 l/hr max
- Secondary dilution water system for the metered concentrate consisting of manual rate set valve, variable area flow indicator and static mixer
- Concentrate progressive cavity metering pump 75-750 l/hr (4 bar G maximum as standard) and frequency inverter controls for either manual dial or 4-20mA pump output control
- Control panel to IP55 classification with isolator, run light, machine on switch, common trip light and low water flow light. Volt-free terminals for common alarm. Supply voltage 415V, 3ph, 50/60 Hz. (5 wire)

## Product Sheet



- LFS Water low flow switch
- PRV Pressure regulating valve
- PG Pressure gauge
- SC2 Solution pump frequency control (0.55kW - 3ph)
- LS3 Zone 1 low level sensor- feeder cut out
- TP4 Secondary water inlet
- TP1 Clean water inlet (4.0 - 6.0 Bar G)

- SC1 Powder feed control (man)
- M1 Powder feed drive (0.18kW - 3ph)
- TP2 Powder polymer fill
- M2 Mixer drive (0.37kW - 3ph)
- TP3 Polymer solution outlet
- LS1 System auto make-up sensors
- LS2 Low/Low Level Sensor-Pump Protection

Siemens  
Water Technologies

Germany  
+49 8221 9040  
wtger.water@siemens.com

United Kingdom  
+44 1732 771777  
wtuk.water@siemens.com

USA  
+1 856 507 9000  
wtus.water@siemens.com

© 2008 Siemens Water Technologies Corp.  
Literature Number: ST.350.340.000.EE.PS.1208  
Subject to change without prior notice.

Stranco and Polyblend are trademarks of Siemens its subsidiaries or affiliates.

The information provided in this brochure contains merely general descriptions of characteristics of performance which in case of actual use do not always apply as described or which may change as a result of further development of the products. An obligation to provide the respective characteristics shall only exist if expressly agreed in the terms of contract.